



# The Bagpipe

Spring Issue 2024

## A Letter from Our Directors

Dear Camp Lochearn Family,

We have been hard at work over the winter preparing for what we feel will be our **BEST SUMMER EVER** in 2024! We have the most incredible group of campers coming home to Lochearn - many returning and some who will be welcomed at camp for their first summer!

This issue of the Bagpipe is our opportunity to introduce you to some of our **Leadership Staff**. Along with our Leadership, we have a talented and dynamic group of returning and new staff joining us this summer. We take pride in our quality of hiring and recognize that our staff are an integral part of creating a safe and special summer of fun for your daughters!

In addition to the new activity choices you will see in music, the arts, and sports this summer, we are also excited about the inclusion of two new programs at camp! We have thoughtfully designed an extended summer opportunity for those campers wanting to return to camp after their CT (Counselor-in-Training) summer. Our **Lochearn Leader Program** is for former campers who have completed their 10th grade year, and our **Junior Counselor (JC) Program** is for a limited number of former campers who have completed their 11th grade year and have undergone a highly-selective application process. How wonderful it will be to have the Lochearn Leader spirit and JC energy at camp this summer! In this issue of the Bagpipe, we will highlight the traditional progression for your daughters' years at Lochearn. The grades identified are your daughters' current grade, and the name identifications were chosen to embrace Vermont and Lochearn's Scottish heritage.

We are counting down the days until we get to meet you at beautiful Lake Fairlee! What a magical summer it is gearing up to be!

*Eliza & Ann*





**ELIZA**  
OWNER - DIRECTOR  
BATES COLLEGE / UNIV OF FLORIDA\*



**ANN**  
OWNER - DIRECTOR  
SUNY - CORTLAND\*



**ERIN**  
ASSOCIATE DIRECTOR  
BATES COLLEGE / UNE\*



**GEORGIA**  
ASSISTANT DIRECTOR  
SUNY - OSWEGO



**NINA**  
ASSISTANT DIRECTOR  
DARTMOUTH / LESLEY UNIVERSITY\*



**KATE ASHBY**  
GIRLS HEAD COUNSELOR  
COLLEGE OF WILLIAM + MARY




**BETH**  
FINE ARTS DIRECTOR  
ILLINOIS STATE UNIV / VIC\*




**AMY**  
CT + B/G LEADER / ARCHERY DIRECTOR  
UNIVERSITY OF MONTANA



**HEIDI**  
WATERFRONT DIRECTOR  
PLYMOUTH STATE\*



**"TUFFER"**  
WATER SPORTS DIRECTOR  
UC-BOULDER / UNE\*



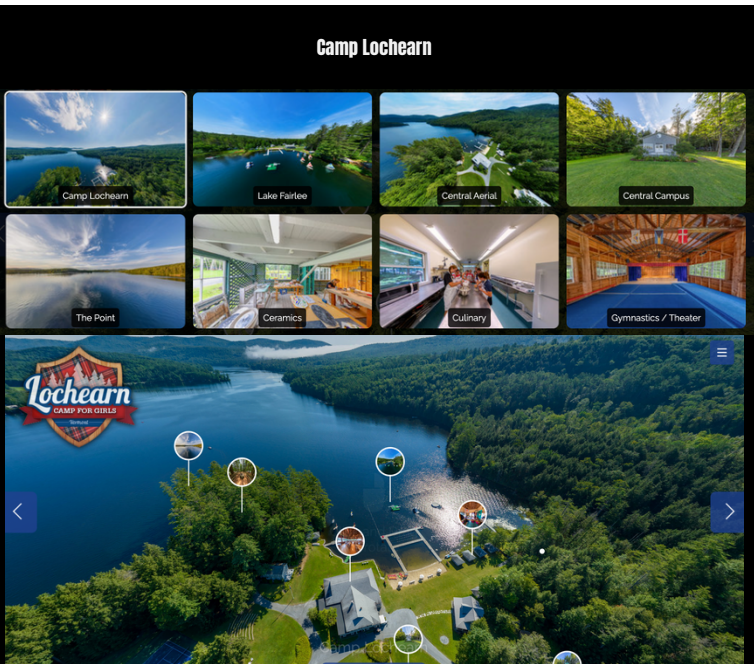
**ANNIE**  
THEATER DIRECTOR  
WESTERN KENTUCKY UNIVERSITY



This year we will celebrate Beth Field's 30th summer at Camp Lochearn! As head of the extensive arts programs at camp, Beth brings her passion for the arts, her multitude of talents, and her infectious laugh to Lake Fairlee each summer. Beth's love and dedication to Lochearn shines through everything she does, and her natural leadership abilities are essential in helping camp run smoothly - from the classes she manages to Highland Hall dining logistics and announcements at Assembly at Cove.

STAFF SPOTLIGHT :  
BETH FIELD

Beth's 30 years at camp span from her start on the waterfront to a myriad of leadership duties through the years, always making the health and safety of our campers her first priority. Beth's ability to truly connect authentically with both campers and staff pairs beautifully with her background in social work and counseling. She keeps tradition at the forefront of everything she does at camp. This is exemplified at our weekly campfires with her taking the lead singing our favorite camp songs, all while sitting on Laura Richards old blue towel (*Laura Richards was a 50 year staff member at Lochearn who overlapped her time at camp with Beth for several years!*)! Beth personifies our core values of LOVE, INTEGRITY, FRIENDSHIP, and EXCELLENCE, and we are beyond lucky to have her as an essential part of the Lochearn circle.



Be sure to check out our newly updated **VIRTUAL TOUR** at [www.camplochearn.com](http://www.camplochearn.com) !  
Featuring new locations and photo galleries !



Thank you to our hard-working  
Facilities Team  
for keeping Lochearn looking its best!



Buck

Facilities Director  
18 yrs at Lochearn!



Pete

5 yrs at Lochearn!





**RUTH**  
RIDING DIRECTOR  
WESTERN STATE COLLEGE OF COLORADO



**STUART**  
TENNIS DIRECTOR  
UNIVERSITY OF ST. ANDREWS



**FREDDY**  
CLIMBING DIRECTOR  
UNIVERSIDAD DE LAS AMERICAS PUEBLA



**ELLIE**  
SAILING DIRECTOR  
CONNECTICUT COLLEGE



**DENISE**  
CAMPUS LEADER  
UNIVERSITY OF THE WEST OF SCOTLAND



**LIZZY**  
CAMPUS LEADER  
CHARLESTON SOUTHERN UNIVERSITY



**VAL**  
CAMPUS LEADER  
UNIVERSIDAD MODELO



**HANNAH**  
CAMPUS LEADER  
QUEEN MARGARET UNIVERSITY



**PATIENCE**  
HEAD CHEF  
JOHNSON + WALES UNIV-RJ



**TRACE**  
ASSISTANT CHEF  
CASTLETON / VTC\*



**KATY**  
LEAD NURSE  
CLEVELAND STATE UNIVERSITY



# The Bagpipe

## BIG NEWS!

### OUR 2024 CAMP MUSICAL IS...



#### THE LOCHEARN PROGRESSION

##### JUNIOR LINE

PICOs 2nd  
OKEMO 3rd

##### SUB SENIOR LINE

SUB CUBS 4th  
UPPER SUB SENIORS 5th

##### SENIOR LINE

SENIORS 6th  
SUPER SENIORS 7th

##### CTPs

COUNSELOR TRAINEE PROSPECTS 8th

##### CTs

COUNSELORS in TRAINING 9th

*NEW in 2024 :*

**LOCHEARN LEADER PROGRAM** 10th  
**JUNIOR COUNSELOR PROGRAM** 11th





# Camp Lochearn

PO Box 44  
Post Mills, VT 05058  
(802) 333-4211



## 2024 Dates

Session 1 - June 22- July 16

Session 2 - July 19-August 12



# HAPPY BIRTHDAY



## March

Cassie M - 1	Georgia W - 13
Hayley H - 2	CeCe S - 14
Julia L - 2	Olivia O - 16
Christina S - 4	Clara Hayes B - 18
Anne H - 5	Tessa L - 19
Izzy M - 6	Lilly C - 21
Loulou P - 6	Quinn K - 24
Bay R - 6	Lily P - 24
Daphne Z - 7	Lilia Z - 24
Sawyer W - 8	Nina S - 25
Olivia S - 9	Pippa B - 27
Harper L - 11	Juliette P - 29
Lyndsey B - 12	Addie M - 30
Juliet G - 12	Hannah S - 30

## April

Scarlett B - 1	Adele B - 19
Saylor D - 3	Eloise A - 20
Whitney S - 3	Greta K - 20
Lily S - 4	Beatrice K - 22
Eleanor F - 5	Isla C - 23
Phebe M - 5	Janie M - 23
Hailey S - 6	Maggie M - 23
Winona L - 8	Bella S - 23
Izzy M - 8	Charlotte S - 23
Clio S - 8	Maya D - 24
Claire M - 14	Anna N - 28
Lily M - 14	Rose L - 29
Anna S - 16	Katie D - 30
Sophie T - 17	

## May

Leigh C - 1	Ava W - 13
Eva E - 2	Sophie Z - 17
Gabi S - 3	Mimi K - 18
Bridgette H - 4	Elena Z - 18
Georgie L - 5	Katie B - 19
Marilyn M - 5	Campbell S - 19
Stella P - 5	Annie W - 20
Delaney A - 6	Mia C - 21
Jillian B - 7	Olivia P - 21
Ruby T - 7	Eve D - 22
Ale W - 8	Bryn O - 23
Beatrice L - 10	Lucy B - 25
Amelia A - 11	Maddie J - 26
Elizabeth C - 11	Bowie K - 26
Orlaith D - 12	Maddy B - 27
Hadley F - 12	Freya R - 31



